

NAVELLI

COLLECTION

NAVELLI PROFILE

THE COMPANY	04
THE NAVELLI BRANCHES	08
FLAGSHIP STORES NETWORK	10

PRODUCTS INDEX 13

INDOOR COLLECTION 22

OUTDOOR COLLECTION

STUDIO COLLECTION

THE WORLD OF MATERIALS

VIDEO GALLERY





NAVELLI WEBSITE

Streamlines searches and takes users on a discovery tour of the company. It is an essential work tool for the partners and a priceless information source for anyone who wants to be constantly "tuned in" to the business.



HISTORIC TRADEMARK

With 35 years of experience, Navelli offers quality and service to all its customers. Standing out with its customizable modern furniture and free interior design service, Navelli is a favorite of many well-known designers in Turkey and abroad. Navelli invites you to discover the of the furniture production



COMPANY SHOWROOM

The company's showroom welcomes clients from all over the world and serves as a venue for important meetings, photo shoots, events, and training sessions. A setting created in 1988 that perfectly encapsulated the spirit and personality of the company, the Navelli style in its purest form.



Navelli is a well-known brand made in Turkey in the field of modern furniture design and an advocate of a classic-modern way of life in the residential and hospitality sectors with a strong reputation in abroad as well.

The company was established in 1988 by Mehmet Emin KAYA. The small-scale artisan workshop quickly expanded and took on a more industrialized appearance.

The entire company is committed to excellence. The second generation has also contributed to the success of Navelli. As part of its commitment to "innovation in the spirit of continuity," the company over the years created a distinctive "Navelli code" that has since become a hallmark of each collection.

INDOOR



The Navelli Collection interprets a new method of home decoration and reflects changes in how we define the home environment. Every year, Navelli introduces a brand-new collection that consists of seating systems, armchairs, tables, chairs, and coordinating items.

HOSPITALITY



Travel for both business and pleasure has significantly increased as a result of globalization. This multicultural group of travelers, who prefer to feel at home wherever they go, served as the source of Navelli's inspiration for its own hospitality initiative.

OUTDOOR



Through the Outdoor Collection, the sophisticated elegance and unrivaled comfort that distinguish the interior design products are expanded to include the outdoors thanks to an impassioned quest for the right materials, carefully selected to resist wear and weather.

STUDIO COLLECTION



The Navelli Collection is so rich and varied that it easily adapts. Aiming to support its customers in every sense, it offers a collection of special selection products for the user.

NAVELLI STORES

Partners are a valuable resource because they are skilled professionals with the kind of passion and tenacity required to support the challenging and intricate mission of the brand to promote Made in Turkey excellence around the globe.



GLOBAL BRAND
EXPANSION
WITH
6 FLAGSHIP
STORES
IN 6 COUNTRIES



The monobrand showrooms are display spaces that completely and effectively convey the language of the brand, showcasing the variety and opulence of the collections in sophisticated architectural settings where everything works together to create a truly authentic brand experience. Navelli flagship stores are managed with skilled local partners who offers guidance in managing the business in terms of strategy through the presentation of the product concept, with the design of the spaces and staging of the customer experience.

PRODUCTS INDEX

SOFAS-MODULAR SYSTEMS



ALFREDO



ALIA



ALTO



ARTLINE



ASYA



BERTI



CAMILA



CAPELLA



CASA



COCOON



DANTE



EVA



FAIRWAY



GROUND



HEXAGON



ISTANBUL



MUITO



NORM



PADOVA



POTTY



TROYA

ARMCHAIRS & POUFS



ALCANTARA



ARCHI



BRONZ



CAMMEO



CASA



EVA



JUNIOR



LENA



NERO



OPUS



PERA



ROTARY



TROYA



TULIP



TUVA



ZETA



BOBO



DEXI



NAVELLI

CHAISE LOUNGES & SOFABEDS

CAPELLA

GROUND

LOVE



NAVELLI

TROYA



BOHO



MONALISA

MUITO

CHAIRS



BRONZ



DEXI



LISA



NAVELLI



NORM



TROYA

TABLES

ARTLINE

CAPELLA



DEXI





NENDO



TROYA

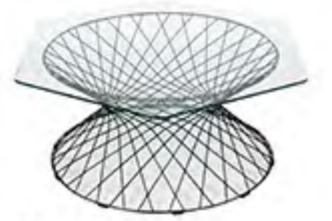


NORM

PARIS



NORM



PARIS

NENDO



POTA



VALLEY

TROYA



VEE



VENGE



WOODY

COFFEE & SIDE TABLE S

ADA



ARTLINE



ASYA



CAPELLA



CELL



EIFFEL

BOOKSHELVES

ASYA

CAPELLA

GROUND

GROUND



HEXA



HONEY

HEXAGON

NORM

TROYA

İSTANBUL



MONO



MOON

WOODY

STORAGE SYSTEMS |

ADA ARTLINE CAPELLA

HEXAGON NORM TROYA

BEDS |

ARTLINE CAPELLA GROUND

HEXAGON MUITO NORM

PADOVA PLATIN POTTY

TROYA

INDOOR COLLECTION

ALFREDO

NAVELLI STUDIO



Alfredo sofa features an asymmetric design, which adds a touch of modern sophistication to any room. Its modular system allows for customization, with various arm and leg options available to suit your needs. This unique piece of furniture offers a stylish and functional addition to any home space.

This Sofa is also incredibly comfortable, with an ergonomic design. It's perfect for relaxing, reading, or working for extended periods of time.





ALFREDO

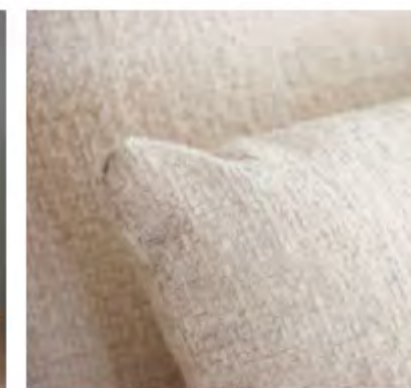
DATA SHEET

Structure: In plywood of various thicknesses. The structure is coated in high-resilience, variable-density polyurethane foam. Armrests and backrests in plywood with high-rubber-content elastic webbing, covered with breathable heat-bonded polyester quilted fibre laminated to white hypoallergenic cotton fabric. Inside the quilt is a bag padded with siliconised microfibre.

Cushions: Padding for backrest cushions in siliconised microfibre with low coefficient of friction, filled in separate channels, with different density, that ensures absolute, lasting localisation of the fibre. This solution guarantees outstanding comfort and allows optimal distribution of body weight over the support surface. Seat cushion made of many layers of variable-density, high resilience polyurethane foam.

Covers: upholstery for the structure, seat and backrest cushions is completely removable in all versions (fabric or leather).

Base: beech wood and perimeter base with adjustable midfeet. Black, oil-free, non-staining protective polyethylene glides.



ALIA



Alia the perfect blend of comfort and style! With its unique oval transitions and wide sitting area, this sofa is the ultimate relaxation destination. The Alia is designed to fit seamlessly into any living room, with a modular construction that allows for custom configurations to suit your space. Whether you want a left-hand or right-hand facing sofa, or prefer a corner or chaise-end configuration. Crafted from high-quality materials, the Alia is built to last. The frame is made from sturdy beech plywood, while the cushions are filled with a premium fiber that provides excellent support and comfort. The sofa is upholstered in a soft and durable fabric that is easy to maintain, ensuring it will look great for years to come.





Alia









ALIA

DATA SHEET

Structure: In plywood of various thicknesses. The structure is coated in high-resilience, variable-density polyurethane foam. Armrests and backrests in plywood with high-rubber-content elastic webbing, covered with breathable heat-bonded polyester quilted fibre laminated to white hypoallergenic cotton fabric. Inside the quilt is a bag padded with siliconised microfibre.

Cushions: Padding for backrest cushions in siliconised microfibre with low coefficient of friction, filled in separate channels, with different density, that ensures absolute, lasting localisation of the fibre. This solution guarantees outstanding comfort and allows optimal distribution of body weight over the support surface. Seat cushion made of many layers of variable-density, high resilience polyurethane foam.

Covers: upholstery for the structure, seat and backrest cushions is completely removable in all versions (fabric or leather).

Base: metal and perimeter base with adjustable midfeet. .



ALTO

NAVELLI STUDIO



The Alto a stylish and comfortable sofa that is perfect for any modern living room. With a helzonic session, the Alto Sofa offers exceptional comfort and support. Crafted from high-quality materials, the Alto features a sturdy frame and soft yet durable upholstery. The sofa's pocket spring is designed to contour to your body, providing excellent support and comfort as you lounge or entertain guests. The clean lines and simple silhouette of the Alto make it easy to integrate into any living room decor, while its neutral color options allow it to complement a wide range of styles.







ALTO

DATA SHEET

Structure: In plywood of various thicknesses.

The structure is coated in high-resilience, variable-density polyurethane foam. Structure in plywood with high-rubber-content helazonic spring seating, covered with breathable heat-bonded polyester quilted fibre laminated to white hypoallergenic. Inside the quilt is a bag padded with siliconised microfibre.

Cushions: Padding for backrest cushions in siliconised microfibre with low coefficient of friction, filled in separate channels, with different density, that ensures absolute, lasting localisation of the fibre. This solution guarantees outstanding comfort and allows optimal distribution of body weight over the support surface. Seat cushion made of many layers of variable-density, high resilience polyurethane foam.

Covers: upholstery for the structure, seat and backrest cushions is completely removable in all versions (fabric or leather).

Base: Beech wood frame, oil-free, non-staining protective polyethylene glides.



ARTLINE



The Artline, combination of leather and fabric creates a stunning contrast that is accentuated by the detailed stitching. Crafted from high-quality materials, the Artline features a sturdy beech plywood frame and a combination of leather and fabric upholstery. The leather adds a touch of luxury and sophistication, while the fabric provides a soft and comfortable surface for lounging. In addition to its stylish design, the seat cushions contain a high-density helazonic seating that provides excellent support and comfort, while the back cushions are goose feather to provide maximum relaxation.













ARTLINE

DATA SHEET

Structure: In plywood of various thicknesses.

The structure is coated in high-resilience, variable-density polyurethane foam. Structure in plywood with high-rubber-content helazonic spring seating, covered with breathable heat-bonded polyester quilted fibre laminated to white hypoallergenic.

Inside the quilt is a bag padded with goose feather

Cushions: Padding for backrest cushions in goose feather

, filled in separate channels, with different density, that ensures absolute, lasting localisation of the fibre. This solution guarantees outstanding comfort and allows optimal distribution of body weight over the support surface. Seat cushion made of many layers of variable-density, high resilience polyurethane foam.

Covers: upholstery for the structure, seat and backrest cushions is completely removable in all versions (fabric or leather).

Base: Beech wood frame, oil-free, non-staining protective polyethylene glides.



ASYA

NAVELLI STUDIO



The masterpiece of comfortable seating the Asya. This stunning piece is a combination of a bookshelf and a side table, adorned with soft, looped fabric and complemented by leather detailing, making it a true feast for the eyes.

With its wide, soft goose feather seating area and back cushions, it's the ultimate spot for relaxation and unwinding after a long day. The bookshelf on one end is perfect for showcasing your favorite books, while the side table on the other end provides a convenient spot to rest your drink or snack while you enjoy your favorite TV show. The leather detailing adds a touch of sophistication and elevates the overall aesthetic of the piece.







ASYA

DATA SHEET

Structure: In plywood of various thicknesses. The structure is coated in high-resilience, variable-density polyurethane foam. Structure in plywood with high-rubber-content helazonic spring seating, covered with breathable heat-bonded polyester quilted fibre laminated to white hypoallergenic. Inside the quilt is a bag padded with goose feather

Cushions: Padding for backrest cushions in goose feather, filled in separate channels, with different density, that ensures absolute, lasting localisation of the fibre. This solution guarantees outstanding comfort and allows optimal distribution of body weight over the support surface. Seat cushion made of many layers of variable-density, high resilience polyurethane foam.

Covers: upholstery for the structure, seat and backrest cushions is completely removable in all versions (fabric or leather).

Base: Hidden leg, abs plastic



BERTI

NAVELLI STUDIO



The Berti is the epitome of comfort and luxury in home furniture. With its cushions and unique leg options, the Berti is designed to offer maximum comfort. The sofa is made using high-quality materials, including goose feathers in the seat and back cushions, providing a soft and cozy feel. The use of goose feathers in the cushions ensures that they retain their shape and provide consistent support, even after years of use. The Berti is available in a range of leg options, including sleek metal legs and hidden legs. This variety of options ensures that the sofa can be customized to suit any interior design style.













BERTI

DATA SHEET

Structure:In plywood of various thicknesses.

The structure is coated in high-resilience, variable-density polyurethane foam. Structure in plywood with high-rubber-content seating, covered with breathable heat-bonded polyester quilted fibre laminated to white hypoallergenic. Inside the quilt is a bag padded with goose feather

Cushions:Padding for backrest cushions in goose feather filled in separate channels, with different density, that ensures absolute, lasting localisation of the fibre. This solution guarantees outstanding comfort and allows optimal distribution of body weight over the support surface. Seat cushion made of many layers of variable-density, high resilience polyurethane foam.

Covers: Upholstery for the structure, seat and backrest cushions is completely removable in all versions (fabric or leather).

Base:stainless metal frame



CAMILA



Camila a perfect blend of style and comfort. With its sleek and modern design, this sofa is the ideal addition to any living room or entertainment area. The Camila features a unique angled structure that provides a comfortable and supportive seating experience. Its wide seat and backrest offer ample space for lounging or entertaining, making it the perfect spot for spending time with family and friends. One of the standout features of the Camila is its slim, oval-shaped arms. The arms are also ergonomically designed to provide a comfortable resting spot for you. With its unique angled structure, slim oval arms, and wide seating area, this sofa offers the perfect combination of style and comfort.







Camila





CAMILA

DATA SHEET

Structure:In plywood of various thicknesses.

The structure is coated in high-resilience, variable-density polyurethane foam. Structure in plywood with high-rubber-content seating, covered with breathable heat-bonded polyester quilted fibre laminated to white hypoallergenic. Inside the quilt is a bag padded with goose feather

Cushions:Padding for backrest cushions in goose feather filled in separate channels, with different density, that ensures absolute, lasting localisation of the fibre. This solution guarantees outstanding comfort and allows optimal distribution of body weight over the support surface. Seat cushion made of many layers of variable-density, high resilience polyurethane foam.

Covers: Upholstery for the structure, seat and backrest cushions is completely removable in all versions (fabric or leather).

Base:Beech wood frame, metal



CAPELLA

GAMZE KAYA



Capella It has a stylish metal base, a luxurious combination of leather and fabric upholstery, and a soft and comfortable seating design that provides extra comfort. It allows you to enjoy the conversation by creating a living space in itself. With its useful side table, Capella is the perfect complement to any contemporary living room. Capella's stylish metal leg adds a sophisticated touch to any living space, while the blend of leather and fabric materials gives the sofa a unique look. It brings the common living space to your home so that you can enjoy listening to the memories that become beautiful together.



Capella- Gamze Kaya









CAPELLA

DATA SHEET

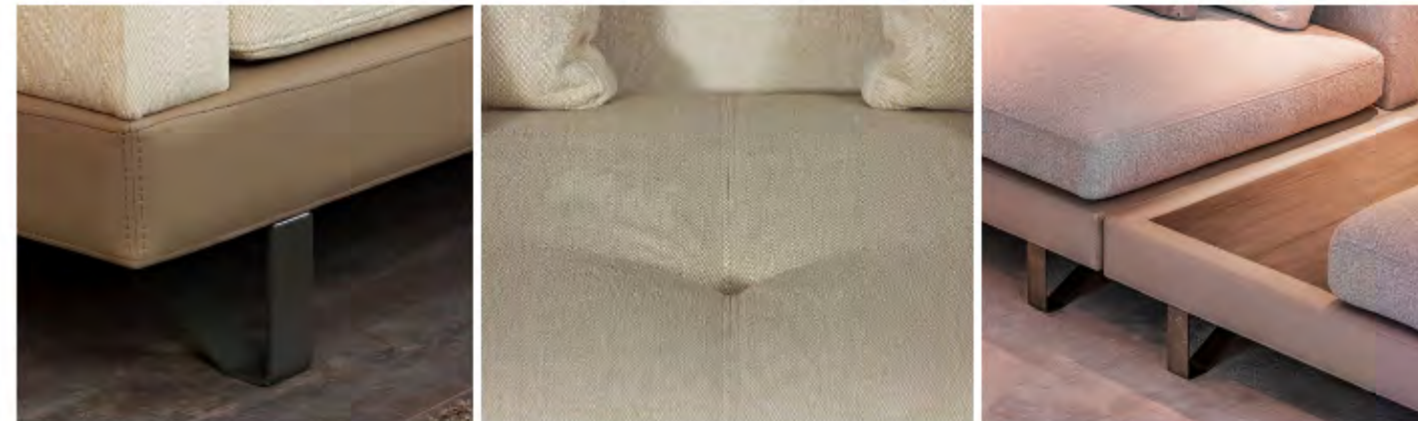
Structure: In plywood of various thicknesses.

The structure is coated in high-resilience, variable-density polyurethane foam. Structure in plywood with high-rubber-content seating, covered with breathable heat-bonded polyester quilted fibre laminated to white hypoallergenic. Inside the quilt is a bag padded with goose feather

Cushions: Padding for backrest cushions in goose feather filled in separate channels, with different density, that ensures absolute, lasting localisation of the fibre. This solution guarantees outstanding comfort and allows optimal distribution of body weight over the support surface. Seat cushion made of many layers of variable-density, high resilience polyurethane foam.

Covers: Upholstery for the structure, seat and backrest cushions is completely removable in all versions (fabric or leather).

Base: Beech wood frame, metal



CASA

NAVELLI STUDIO



Our sofas are crafted from high-quality Nubuck fabric that is designed to withstand daily wear and tear for many years to come. At Casa, we believe that quality and attention to detail are key, which is why we take pride in our exceptional craftsmanship and stitching detail. Choose Casa Sofa and experience the perfect blends of comfort and elegance.







CASA

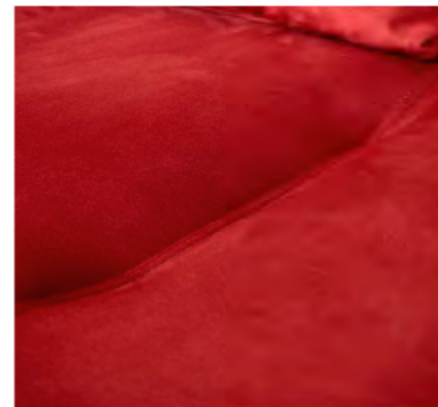
DATA SHEET

Structure: In plywood of various thicknesses. The structure is coated in high-resilience, variable-density polyurethane foam. Structure in plywood with high-rubber-content seating, covered with breathable heat-bonded polyester quilted fibre laminated to white hypoallergenic. Inside the quilt is a bag padded with silicons

Cushions: Padding for backrest cushions in silicons filled in separate channels, with different density, that ensures absolute, lasting localisation of the fibre. This solution guarantees outstanding comfort and allows optimal distribution of body weight over the support surface. Seat cushion made of many layers of variable-density, high resilience polyurethane foam.

Covers: Upholstery for the structure, seat and backrest cushions is completely removable in all versions (fabric or leather).

Base: Metal



COCOON

GAMZE KAYA



Cocoon, which gave its name to the 2023 Collection. With its unique combination of leather and boucle fabric, this sofa is the perfect complement to any modern living space. It was designed by breaking the shell of the cocoon and inspired by the regeneration phase. The leather and fabric combination symbolizes the breaking moment of the contrast transition, highlighted by detailed stitching. This attention to detail gives the sofa an impressive look and feel.

Cocoon is inviting with its soft lines. The coil springs provide an exceptional level of support and comfort, allowing you to enjoy long hours of relaxation without any discomfort. It creates a perfect living space to rest and unwind with Cocoon.



Cocoon- Gamze Kaya





NAVELLI



COCOON

DATA SHEET

Structure:In plywood of various thicknesses.

The structure is coated in high-resilience, variable-density polyurethane foam. Structure in plywood with high-rubber-content seating, covered with breathable heat-bonded polyester quilted fibre laminated to white hypoallergenic. Inside the quilt is a bag padded with silicons

Cushions:Padding for backrest cushions in silicons filled in separate channels, with different density, that ensures absolute, lasting localisation of the fibre. This solution guarantees outstanding comfort and allows optimal distribution of body weight over the support surface. Seat cushion made of many layers of variable-density, high resilience polyurethane foam.

Covers: Upholstery for the structure, seat and backrest cushions is completely removable in all versions (fabric or leather).

Base:Hidden leg



DANTE



Dante, a modern masterpiece that seamlessly blends style and comfort. Featuring unique oval-shaped back and arm details, this sofa adds stunning beauty to all contemporary living spaces.

Crafted with the utmost care and attention to detail, the Dante is a testament to quality and durability. The sleek lines and clean design of the sofa make it a versatile piece that can complement any home decor.

The Dante is available in a variety of configurations, including a chaise lounge and corner sofa, allowing you to create the perfect seating arrangement for your home.





















DANTE

DATA SHEET

Structure: In plywood of various thicknesses. The structure is coated in high-resilience, variable-density polyurethane foam. Armrests and backrests in plywood with high-rubber-content elastic webbing, covered with breathable heat-bonded polyester quilted fibre laminated to white hypoallergenic cotton fabric. Inside the quilt is a bag padded with goose feather microfibre.

Cushions: Padding for backrest cushions in siliconised microfibre with low coefficient of friction, filled in separate channels, with different density, that ensures absolute, lasting localisation of the fibre. This solution guarantees outstanding comfort and allows optimal distribution of body weight over the support surface. Seat cushion made of many layers of variable-density, high resilience polyurethane foam.

Covers: upholstery for the structure, seat and backrest cushions is completely removable in all versions (fabric or leather).

Base: beech wood leg

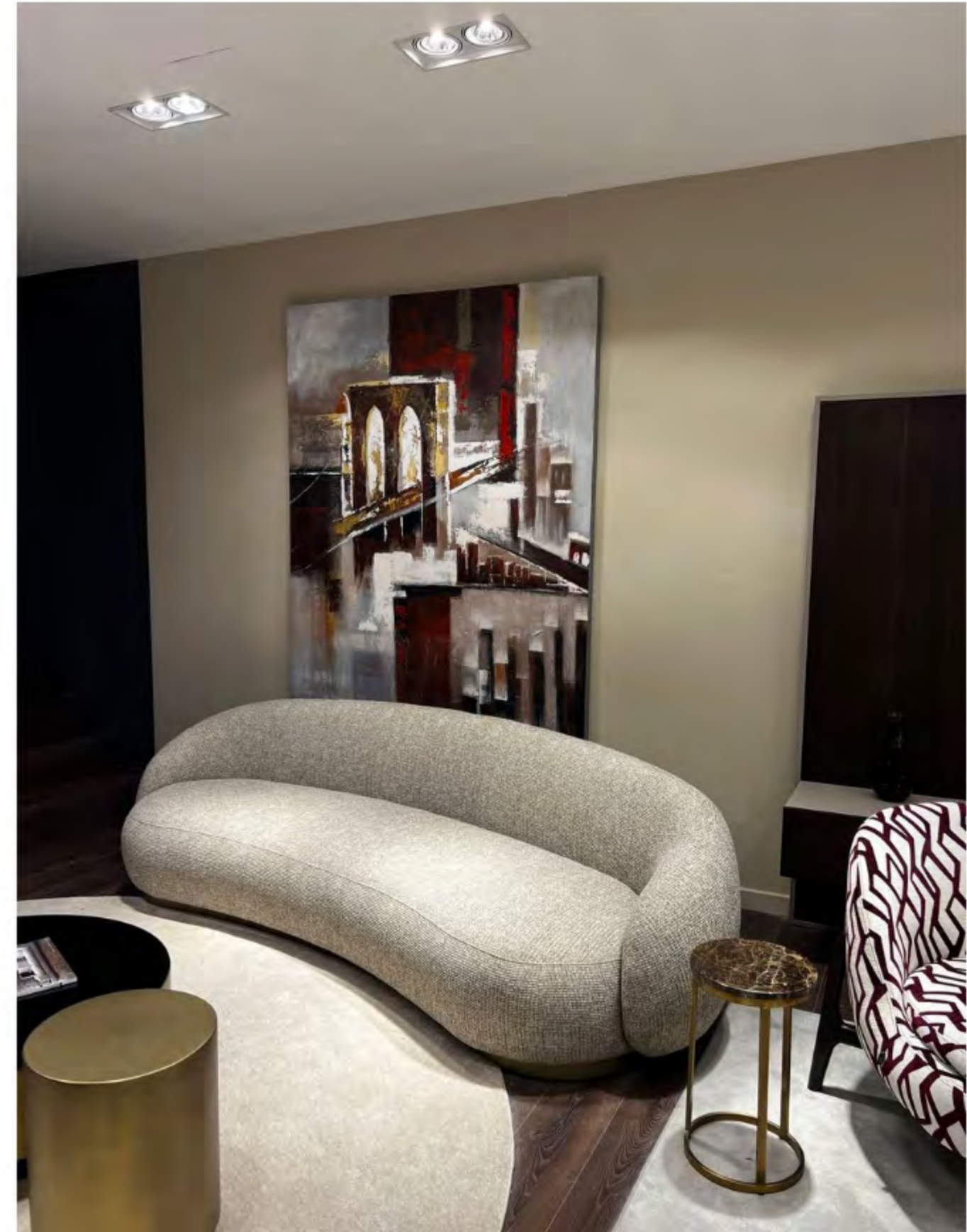


EVA



Eva Sofa, the matchless blend of modern style and comfort, ideal for hotels, homes, and any contemporary living space. With its unique bean-shaped design and round cushions, this sofa adds a touch of elegance and playfulness to any room.

Whether you're looking to create a welcoming lounge area for hotel guests or a cozy seating arrangement in your home, the Eva Sofa provides the perfect combination of comfort and fashion.



Eva





EVA

DATA SHEET

Structure: In plywood of various thicknesses.

The structure is coated in high-resilience, variable-density polyurethane foam. Structure in plywood with high-rubber-content seating, covered with breathable heat-bonded polyester quilted fibre laminated to white hypoallergenic. Inside the quilt is a bag padded with silicons

Cushions: Padding for backrest cushions in silicons filled in separate channels, with different density, that ensures absolute, lasting localisation of the fibre. This solution guarantees outstanding comfort and allows optimal distribution of body weight over the support surface. Seat cushion made of many layers of variable-density, high resilience polyurethane foam.

Covers: Upholstery for the structure, seat and backrest cushions is completely removable in all versions (fabric or leather).

Base: Beech wood frame



FAIRWAY

NAVELLI STUDIO



Fairway Sofa is the epitome of luxury and comfort. With optional goose feather cushions for both the seat and back, you'll feel like you're sinking into a cloud every time you sit down. The cushions offer the perfect balance of softness and support, providing an unmatched level of comfort.

The sofa also features a convenient side table, making it the perfect spot for a cup of tea or a place to set your book while you relax. The table is the optimal size to hold a drink or snack, so you don't have to leave the comfort of the sofa to get what you need. To complete the look, Fairway Sofa is available with a variety of stylish leg options, including sleek metal or elegant wooden legs.











FAIRWAY

DATA SHEET

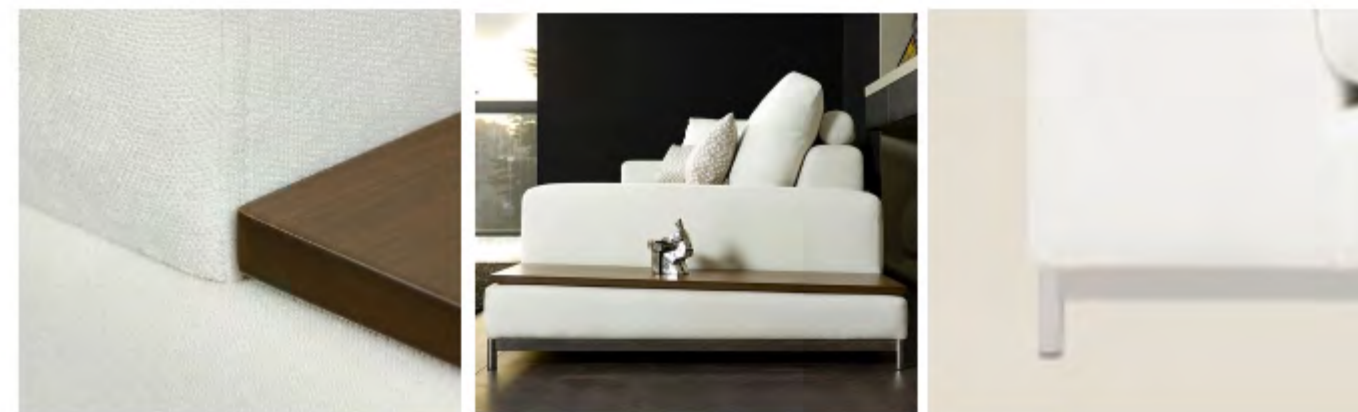
Structure: In plywood of various thicknesses.

The structure is coated in high-resilience, variable-density polyurethane foam. Structure in plywood with high-rubber-content seating, covered with breathable heat-bonded polyester quilted fibre laminated to white hypoallergenic. Inside the quilt is a bag padded with goose feather

Cushions: Padding for backrest cushions in goose feather filled in separate channels, with different density, that ensures absolute, lasting localisation of the fibre. This solution guarantees outstanding comfort and allows optimal distribution of body weight over the support surface. Seat cushion made of many layers of variable-density, high resilience polyurethane foam.

Covers: Upholstery for the structure, seat and backrest cushions is completely removable in all versions (fabric or leather).

Base: stainless metal frame



GROUND

GAMZE KAYA



Ground flawless design reveals a flawless design that stands out with its rigid lines. The floor's modular design allows you to configure it to fit any space, making it a great choice for spaces both large and small. The floor offers an exceptional level of comfort and style.

The sofa's elegant design is further complemented by its flawless stitching that adds a touch of elegance and sophistication to the overall look, while its sleek design makes it a statement piece in any room. Its modular design, premium materials and exceptional craftsmanship make it a must-have item for anyone looking to upgrade their home decor.



Ground- Gamze Kaya





Ground- Gamze Kaya











GROUND

DATA SHEET

Structure: In plywood of various thicknesses. The structure is coated in high-resilience, variable-density polyurethane foam. Structure in plywood with high-rubber-content seating, covered with breathable heat-bonded polyester quilted fibre laminated to white hypoallergenic. Inside the quilt is a bag padded with goose feather

Cushions: Padding for backrest cushions in goose feather filled in separate channels, with different density, that ensures absolute, lasting localisation of the fibre. This solution guarantees outstanding comfort and allows optimal distribution of body weight over the support surface. Seat cushion made of many layers of variable-density, high resilience polyurethane foam.

Covers: Upholstery for the structure, seat and backrest cushions is completely removable in all versions (fabric or leather).

Base: stainless metal frame



HEXAGON



The Hexagon is a stylish and comfortable seating option that takes its name from its hexagonal shape. With its deep seat and asymmetrical arm design, this sofa is always on-trend and perfect for any modern home.

Crafted with comfort in mind, the Hexagon, providing a luxurious place to relax and unwind. Made from high-quality materials, this sofa is built to last and withstand daily wear and tear. The sturdy frame ensures stability and durability, while the soft yet durable upholstery adds to the overall comfort and sophistication of the design.



Hexagon





HEXAGON

DATA SHEET

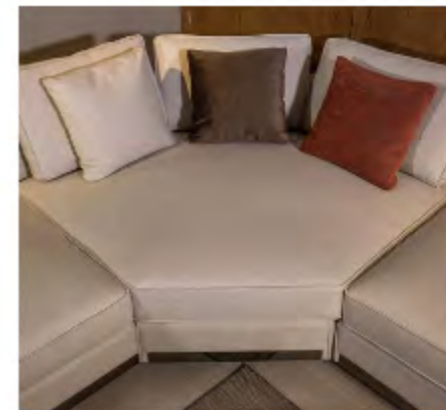
Structure: In plywood of various thicknesses.

The structure is coated in high-resilience, variable-density polyurethane foam. Structure in plywood with high-rubber-content seating, covered with breathable heat-bonded polyester quilted fibre laminated to white hypoallergenic. Inside the quilt is a bag padded with goose feather

Cushions: Padding for backrest cushions in goose feather filled in separate channels, with different density, that ensures absolute, lasting localisation of the fibre. This solution guarantees outstanding comfort and allows optimal distribution of body weight over the support surface. Seat cushion made of many layers of variable-density, high resilience polyurethane foam.

Covers: Upholstery for the structure, seat and backrest cushions is completely removable in all versions (fabric or leather).

Base: stainless metal frame



İSTANBUL

GAMZE KAYA



It reveals the elegant texture of Istanbul with its form and details in the design. Traces of the shabby structure of goose down in a classical structure symbolize the complex beauty of the city. The designer carried his bond to Istanbul sofa. This armchair, which stands out with the perfect harmony of velvet and boucle fabric and the extraordinary comfort of goose down It is designed to offer superior comfort and elegance.

The sofa is also filled with luxurious goose down providing an unmatched level of comfort.

The sofa also consists of a natural oak veneer base and elegant details.

The unique combination of velvet and boucle fabric, the superior comfort of goose down and natural oak veneer legs make it the perfect place to relax and lie down.



İSTANBUL

DATA SHEET

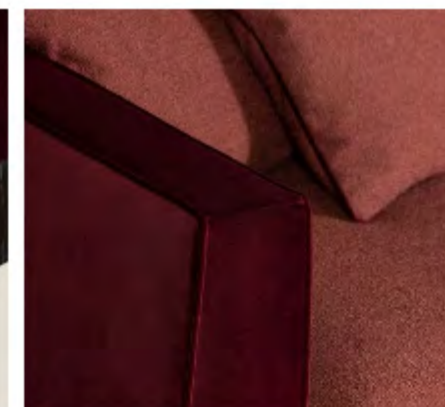
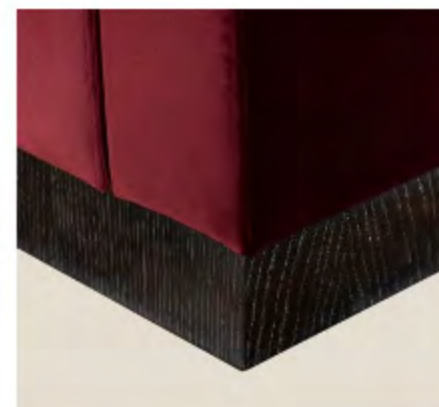
Structure: In plywood of various thicknesses.

The structure is coated in high-resilience, variable-density polyurethane foam. Structure in plywood with high-rubber-content seating, covered with breathable heat-bonded polyester quilted fibre laminated to white hypoallergenic. Inside the quilt is a bag padded with goose feather

Cushions: Padding for backrest cushions in goose feather filled in separate channels, with different density, that ensures absolute, lasting localisation of the fibre. This solution guarantees outstanding comfort and allows optimal distribution of body weight over the support surface. Seat cushion made of many layers of variable-density, high resilience polyurethane foam.

Covers: Upholstery for the structure, seat and backrest cushions is completely removable in all versions (fabric or leather).

Base: Beech wood frame



MUITO

NAVELLI STUDIO



Muito, which is a modular seating system with a versatile design that includes both individual seats and corner pieces that fits any modern decor: its unique structure starts from the floor and includes both individual seats and corner pieces, offers comfortable and stylish seating. One of the standout features of the Muito is its sturdy frame and durable foam filling, which provide long-lasting comfort and support.

Its clean lines, neutral colors, and minimalist design make it an ideal choice for any contemporary living space. With its sturdy frame, durable foam filling, and versatile design, the Muito is the perfect addition to any living space.











MUITO

DATA SHEET

Structure: In plywood of various thicknesses. The structure is coated in high-resilience, variable-density polyurethane foam. Structure in plywood with high-rubber-content seating, covered with breathable heat-bonded polyester quilted fibre laminated to white hypoallergenic. Inside the quilt is a bag padded with goose feather

Cushions: Padding for backrest cushions in goose feather filled in separate channels, with different density, that ensures absolute, lasting localisation of the fibre. This solution guarantees outstanding comfort and allows optimal distribution of body weight over the support surface. Seat cushion made of many layers of variable-density, high resilience polyurethane foam.

Covers: Upholstery for the structure, seat and backrest cushions is completely removable in all versions (fabric or leather).

Base: Beech wood frame



NORM

NAVELLI STUDIO



Norm is the epitome of comfort and style. With its wide and luxurious seating, you can sink into the softness of the sofa and relax in maximum comfort. The sofa, designed with high quality goose down, provides a relaxing and calming effect that will make you feel like you are flying on a cloud.

Norm has a modern and stylish design that will complement any contemporary living space, as well as offering extraordinary comfort. The clean lines and simple yet elegant shape make it a versatile piece of furniture that will blend seamlessly into any decor.







NORM

DATA SHEET

Structure:In plywood of various thicknesses.

The structure is coated in high-resilience, variable-density polyurethane foam. Structure in plywood with high-rubber-content seating, covered with breathable heat-bonded polyester quilted fibre laminated to white hypoallergenic. Inside the quilt is a bag padded with goose feather

Cushions:Padding for backrest cushions in goose feather filled in separate channels, with different density, that ensures absolute, lasting localisation of the fibre. This solution guarantees outstanding comfort and allows optimal distribution of body weight over the support surface. Seat cushion made of many layers of variable-density, high resilience polyurethane foam.

Covers: Upholstery for the structure, seat and backrest cushions is completely removable in all versions (fabric or leather).

Base:Beech wood frame



PADOVA

EMİN KAYA



The Padova is a luxurious piece of furniture that perfectly blends elegance and comfort. Its striking design features a harmonious combination of upholstery fabric and leather, creating an alluring appeal that is hard to resist. The sofa's frame is constructed with durable materials that ensure longevity and stability. One of the most noteworthy aspects of the Padova Sofa is its mysterious synergy between the upholstery fabric and the leather. The upholstery fabric is carefully selected to complement the leather, resulting in an ultra-soft seating experience that is unmatched. The combination of the two elements creates a unique feeling of comfort and relaxation, making it the perfect place to unwind after a long day.

The attention to detail in the Padova is evident in the stitching that runs along the edges of the fabric. The stitching adds an element of sophistication to the design, highlighting the meticulous craftsmanship that went into creating this piece of furniture.



Padova- Emin Kaya





PADOVA

DATA SHEET

Structure: In plywood of various thicknesses.

The structure is coated in high-resilience, variable-density polyurethane foam. Structure in plywood with high-rubber-content seating, covered with breathable heat-bonded polyester quilted fibre laminated to white hypoallergenic. Inside the quilt is a bag padded with hyper and silicon

Cushions: Padding for backrest cushions in goose feather filled in separate channels, with different density, that ensures absolute, lasting localisation of the fibre. This solution guarantees outstanding comfort and allows optimal distribution of body weight over the support surface. Seat cushion made of many layers of variable-density, high resilience polyurethane foam.

Covers: Upholstery for the structure, seat and backrest cushions is completely removable in all versions (fabric or leather).

Base: Hidden leg



POTTY



Potty is a perfect choice for any home or office. This sofa combines the luxurious texture of velvet fabric with the long-lasting comfortable sponge and the durability of a beech wood frame to create a sturdy and comfortable seating option. The elegant and sleek design of the sofa makes it a stylish addition to any space. The velvet fabric provides a soft and smooth feel, while the beech wood frame ensures the sofa can withstand the wear and tear of everyday use. Its timeless design and quality craftsmanship ensure that it will remain a beloved piece of furniture in your home for years to come.





Potty





POTTY

DATA SHEET

Structure:In plywood of various thicknesses.

The structure is coated in high-resilience, variable-density polyurethane foam. Structure in plywood with high-rubber-content seating, covered with breathable heat-bonded polyester quilted fibre laminated to white hypoallergenic. Inside the quilt is a bag padded with silicons

Cushions:Padding for backrest cushions in silicons filled in separate channels, with different density, that ensures absolute, lasting localisation of the fibre. This solution guarantees outstanding comfort and allows optimal distribution of body weight over the support surface. Seat cushion made of many layers of variable-density, high resilience polyurethane foam.

Covers: Upholstery for the structure, seat and backrest cushions is completely removable in all versions (fabric or leather).

Base:Hidden leg



TROYA

GAMZE KAYA



Troya, With a range of luxurious features, including a high-density polyurethane foam core, goose feather back cushions, and stylish metal legs, this sofa is the perfect addition to any home. At the heart of the Troya is a high-density polyurethane sponge and package spring, which is specially designed to provide superior comfort and support. This sponge is encased in a high-quality fabric that is both durable and easy to clean, ensuring that the sofa stays looking and feels great for years to come. To further enhance the comfort of the sofa, the back cushions are made from soft and luxurious goose feather, which provides a comfortable place to rest. This is complemented by the unique armrest design, which is both stylish and functional, providing an additional level of comfort and support. The sofa also features stylish metal legs, which not only look great but also provide a stable foundation for the sofa. These legs are designed to be both sturdy and stylish, giving the sofa a sleek and modern look that is sure to impress. In addition to its luxurious features, the Troya Corner Sofa is also crafted from high-quality materials, including a durable and stylish velvet fabric that is designed to withstand the rigors of everyday use. This means that the sofa will continue to look and feel great, even after years of use.









TROYA

DATA SHEET

Structure: In plywood of various thicknesses. The structure is coated in high-resilience, variable-density polyurethane foam. Structure in plywood with high-rubber-content seating, covered with breathable heat-bonded polyester quilted fibre laminated to white hypoallergenic. Inside the quilt is a bag padded with silicons

Cushions: Padding for backrest cushions in silicons filled in separate channels, with different density, that ensures absolute, lasting localisation of the fibre. This solution guarantees outstanding comfort and allows optimal distribution of body weight over the support surface. Seat cushion made of many layers of variable-density, high resilience polyurethane foam.

Covers: Upholstery for the structure, seat and backrest cushions is completely removable in all versions (fabric or leather).

Base: Metal





ALCANTARA

NAVELLI STUDIO



Alcantara is a modern and stylish piece of furniture that is sure to enhance the look of any living space. With its slim metal legs, sturdy beech plywood frame, and a choice of open or closed-back options, this armchair offers both comfort and sophistication.

The armchair's metal legs are not only stylish but also sturdy, providing a stable base for the armchair. One of the unique features of the Alcantara Armchair is the option to choose between an open or closed-back design. Both options offer excellent support and comfort, making it easy to relax and unwind in this stylish armchair.

To complete the look, the Alcantara Armchair also comes with a matching ottoman, which can be used as a footrest or an extra seating option. The ottoman is designed to match the armchair perfectly, with the same sleek lines and modern design.



Alcantara- Navelli Studio



Alcantara- Navelli Studio





ARCHI

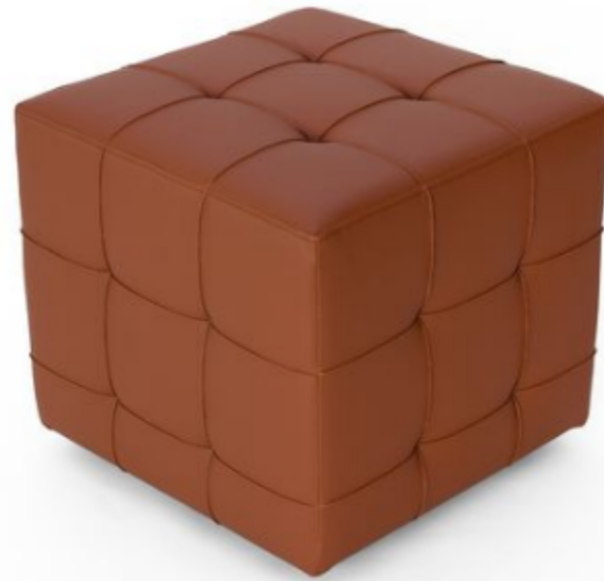


Archi is a beautiful piece of furniture that perfectly captures the harmony between elegant wooden frame and soft fabric and seating. This comfortable Scandinavian style armchair is designed with a wooden frame that has a minimalistic, yet elegant look.

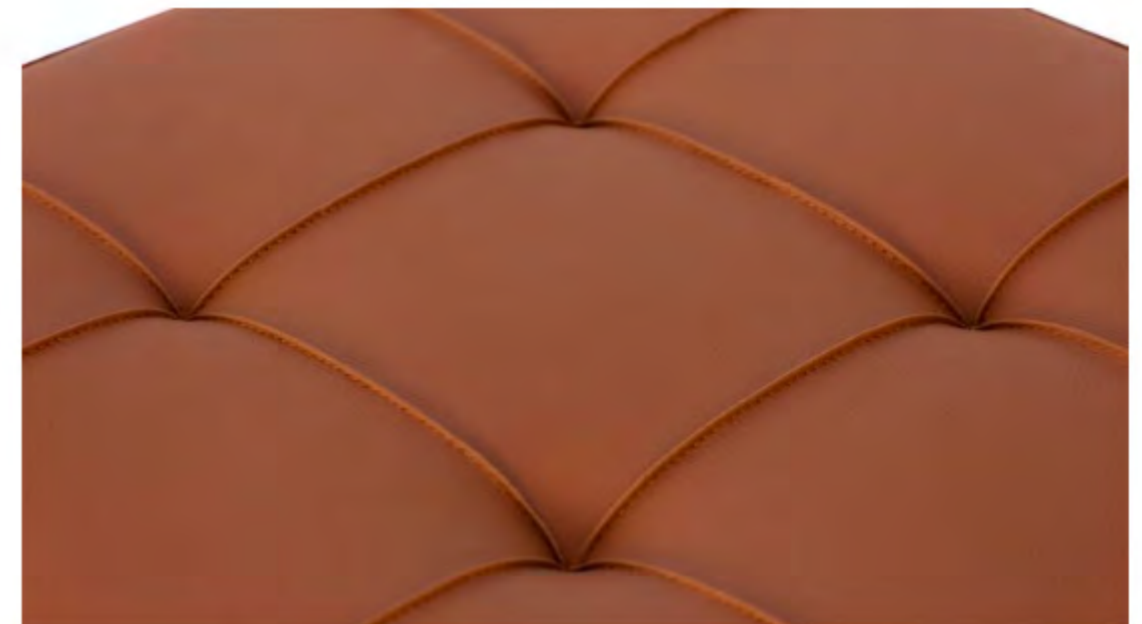


BOBO

NAVELLI STUDIO



A square-shaped Bobo with exquisite craftsmanship and finely-detailed stitching on its leather fabric is a true testament to quality and style. The attention to detail on this pouf is unparalleled, with every stitch meticulously executed to create a stunning finished product. In addition to its beautiful appearance, the Bobo pouf is also incredibly versatile. It can be used as a footrest, extra seating, or even as a small coffee table when paired with a tray.



BRONZ

NAVELLI STUDIO



Bronz Sofa is a stunning piece of furniture that combines leather and velvet fabrics with elegant wooden legs to create an incredible visual display. Available as a sofa, armchair, and ottoman, this furniture set is the perfect choice for those who value both style and comfort. One of the most striking features of the Bronz Koltuk is the way it combines different textures and materials to create a unique and luxurious look. The smooth leather upholstery adds a touch of elegance and sophistication, while the soft velvet fabric provides a cozy and comfortable feel. The contrast between these two materials creates a beautiful and harmonious balance that is truly eye-catching. The wooden legs of the Bronz Armchair model are another key element of its design.



Bronz- Navelli Studio



CAMMEO

NAVELLI STUDIO



The Cammeo lounge armchair showcases a mysterious combination of metal and fabric, creating a unique and intriguing design. While the twisted metal frame provides a modern look, the fabric pad on the leather adds comfort and warmth to the overall aesthetic. This unexpected pairing of materials creates an interesting contrast that catches the eye and invites the viewer to take a closer look.



Cammeo- Navelli Studio



CASA

NAVELLI STUDIO



The Casa armchair which combines a fabric with comfortable seating and metal legs: The armchair design features a deep and comfortable seat that provides excellent support for extended periods of sitting.



DEXI



Dexi is a practical and modern piece of furniture that exudes a unique charm thanks to its meticulous craftsmanship. The square-shaped top, upholstered in luxurious velvet fabric, is accented by precise stitching that adds to its overall appeal. The pouf's sleek, slender legs are also wrapped in the same fabric, creating a cohesive and sophisticated look. It can be used as an extra seat, a footrest, etc. Its compact size makes it easy to move around and tuck away when not in use. The attention to detail and quality materials used in the making of Dexi ensure that it will be a durable and long-lasting addition to any home.

EVA



Eva, is a luxurious and comfortable seating option that will transform your living space. This armchair is designed to offer the utmost in relaxation and style. With its smooth curves and soft edges, the Eva is a modern and elegant addition to any interior design. Its simple yet striking design allows it to seamlessly blend into any room and complement a variety of decor styles.



JUNIOR

NAVELLI STUDIO



Junior, the ultimate comfort seating option with a range of features that are sure to capture your attention. This chair comes in a variety of styles to suit your preferences, whether you prefer a mechanized chair that sways back and forth or a wooden base chair that rotates 360 degrees. One of the standout features of the Junior Berjer is its versatility. The rotating base also makes it easy to turn the chair in any direction, giving you maximum freedom of movement. The ottoman is designed to match with the chair perfectly, with its fabric type and modern structure and stylish design. Whether you prefer a mechanized or wooden base, the Junior is the perfect addition to any home.



Junior- Navelli Studio



Junior- Navelli Studio



Junior- Navelli Studio



LENA

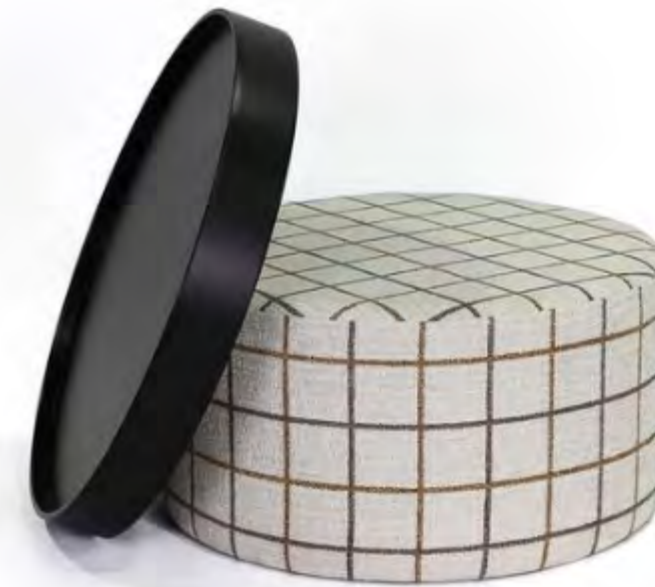


The Lena is a perfect product of modern design, featuring a wooden frame that adds a touch of natural warmth to any living space. The short armrests and compact size make it a versatile piece that can easily fit into any room, while the upholstered seat and backrest provide comfort and support. The legs are made from high-quality beech wood, providing durability and stability, while their sleek design adds a touch of modernity to the chair.



NAVELLI

NAVELLI STUDIO



Navelli pouf, which has a unique atmosphere with its carefully selected fabrics produced in different diameters, can be used in different options with its tray on the top. It takes its name from the navelli logo it wears. The cylindrical shape of the poufs is in different diameters and offers you options suitable for your space. One of the highlights of the Navelli pouf is its versatility. The pouf comes with a removable tray that can be used in a variety of ways. You can use it to hold drinks and snacks, as a decorative display for candles and other small items.

NERO

NAVELLI STUDIO



With its solid wood frame and polyurethane foam filling, the Nero promises to be a reliable and long-lasting addition to any living space. Its natural wood legs add a touch of sophistication and elegance. The Nero polyurethane foam filling offers excellent comfort, providing that you can relax and unwind in style. The polyurethane filling is also designed to retain its shape over time, so you can enjoy the same level of comfort for years to come.



OPUS

NAVELLI STUDIO



Opus, a modern design featuring a metal leg structure. With its wide seating area and rotating mechanism, this chair offers both comfort and versatility, making it a perfect fit for any living space. The metal legs provide a sturdy base, while the wide seat offers ample room for relaxation. The rotating mechanism allows you to easily swivel the chair, making it perfect for use in a variety of settings.



PERA

NAVELLI STUDIO



The Pera combines a modern look with the excellent comfort provided by its wide and soft seating, enhanced by its wooden legs. Its sleek design and minimalist features make it an ideal piece for those who appreciate a clean and sophisticated look. The Pera is not only comfortable and stylish but also built to last, thanks to its durable materials and expert craftsmanship. Whether you're curling up with a good book or entertaining guests, the Pera is a perfect place to do so in style and comfort.

ROTARY



Rotary, the stylish addition to your daily living spaces. With its sleek design and 360-degree swivel structure, Rotary armchair creates a unique composition within your home, making it the center of attention. Crafted with the highest quality materials, Rotary is built to last, with its frame and upholstery ensuring comfort and durability. Its versatile design allows it to complement any interior decor style, whether contemporary or traditional. In conclusion, if you're looking for a statement piece that combines style and functionality, Rotary is the perfect choice for you. Its superior quality, chic design, and versatile structure make it a must-have in any modern home.

TROYA

NAVELLI STUDIO



The Troya. Its deep seat and soft, durable cushions provide unbeatable comfort that is sure to leave you feeling relaxed and refreshed. Its elegant legs give it a modern feel and ensure that it always stays in style, making it a perfect addition to any room. With its sleek design and comfortable seating, the Troya is sure to become a favorite spot for relaxing and unwinding. Its timeless appeal and exceptional quality make it a must-have piece for any contemporary home. Whether you want to add a modern touch to your living room or create a cozy reading nook in your bedroom, the Troya is an excellent choice.



TULIP



Tulip a stunning blend of leather and upholstered fabric, complemented by a range of sturdy metal legs. This exquisite piece of furniture showcases masterful craftsmanship, evident in its durable frame and attention to detail in the stitching. Crafted with both style and comfort in mind, the Tulip Armchair boasts a high-quality leather finish that not only adds a luxurious feel but also ensures durability and longevity. The upholstery fabric is carefully chosen to perfectly complement the leather and add a cozy texture to the chair. One of the standout features of the Tulip is its metal legs, which not only add a modern touch to the overall design but also provide a strong and stable foundation.

TUVA

NAVELLI STUDIO



With its short arms, cylindrical shape, and high-density sponge, this chair provides a comfortable seating experience like no other. Tuva combines comfort and durability with its sleek metal legs, making it a modern and timeless addition to any living room, office or bedroom. One of the standout features of Tuva is its high-density polyuretan. This sponge material provides excellent support and cushioning, ensuring that you can sit comfortably for hours. In addition to its comfortable sponge, Tuva also boasts a sleek and modern design. Its cylindrical shape and short arms give it a unique look that's sure to complement any decor.



ZETA

NAVELLI STUDIO



The Zeta is a modern and stylish piece of furniture that features a wooden frame and comfortable seat and back cushions. The armchair's wooden frame gives it a natural and warm feeling, while the cushions provide a soft and inviting surface to sit on. One of the standout features of the Zeta is the way the wooden frame and cushions are designed to complement each other. The cushions are carefully crafted to match the color and texture of the wood, creating a cohesive and harmonious look.





CAPELLA

GAMZE KAYA

Capella is designed to support your body and provide you with a relaxing sitting experience, whether you are sitting upright or lying down. It allows you to enjoy your pleasure with its side wooden coffee table compartment. High-quality cushioning allows you to stay comfortable even after long-term use.

GROUND

GAMZE KAYA

The Ground is a unique blend of quality, comfort and durability. With its high quality fabric, comfortable seating and solid frame, this chaise longue offers a luxurious and relaxing experience. While providing a different experience with its bookcase arm, it adds aesthetics to your home. Whether you're relaxing with a book or taking a nap, this lounge chair offers the perfect level of comfort.

LOVE



Love the perfect piece of furniture to add to your home if you're looking for a comfortable and durable seating option. With its wide armrests, sleek oval transitions, and high density sponge this chaiselounge provides the ultimate relaxation experience. Designed to mimic the feeling of lying on a bed, the Love is perfect for snuggling up with a loved one or simply enjoying some quality alone time. Its supportive and cushioned seat and backrest offer exceptional comfort, making it an ideal spot for reading, napping, or just lounging.





NAVELLI

NAVELLI STUDIO

Navelli integrates your living space with its 360-degree rotating mechanism. It is not only visually appealing, but also has a comfort level that you will want to lie on all day. Navelli, which is prepared with the utmost care and attention to details, carries the traces of reflecting the comfort, which is the motto of Navelli, to your home with the fabric printing method applied on it.

TROYA

GAMZE KAYA

Troya elegant furniture, extraordinary design, top quality materials and unparalleled comfort have become indispensable for luxury living rooms, lounges and hotels in a short time. The resting chair accessory draws attention with its craftsmanship. Clean lines, smooth curves and sleek silhouette create an understated yet modern aesthetic that exudes luxury and elegance.

BOHO



Boho is a versatile piece of furniture that stands out with its fine arm details, back cushions, comfortable sitting experience that feels like a bed, quality linen fabric and solid frame. This versatile sofa bed is designed to strike the perfect balance between form and function, making it an ideal addition to any living room, guest room or home office. Boho has a subtle sleeve detail that adds a touch of elegance and sophistication to its design. General design. Plush back cushions provide a comfortable and supportive feel, while the comfortable sitting experience makes you feel like you are lying on a bed. The versatile design of the sofa bed also allows it to be easily converted into a comfortable bed, making it a practical solution for unexpected guests or those who simply want to rest and unwind. In addition to its functional features, Boho is also easy to maintain thanks to its wearable upholstery system.



MONA LISA

NAVELLI STUDIO



Monalisa, a perfect solution for those who seek both style and functionality. With its sleek and modern design, the Monalisa is not only a comfortable seating option but also a versatile bed, allowing you to easily switch between the two. Thanks to its innovative mechanism system, the Monalisa can be transformed from a sofa to a bed with just a few effortless moves. Its slender legs give it a chic and contemporary look that will fit perfectly into any home decor. Whether you're looking for a space-saving option for a small apartment, or simply want to add some extra sleeping space for guests, the Monalisa sofa bed is the perfect choice. It provides a comfortable and cozy sleeping area, and when not in use, it can be easily converted back to a stylish and practical sofa.





MUITO

The Muito is a stylish and functional piece of furniture that can add both comfort and elegance to any living space. This versatile piece of furniture functions as both a sofa and a bed, making it a great option for those who live in small spaces or for anyone who wants to have an extra sleeping option for guests. It is upholstered in high-quality materials, providing a comfortable seating surface that will stand up to daily use. When it's time to convert the sofa into a bed, the process is easy and quick. Simply remove the cushions and fold out the bed frame to reveal a comfortable and supportive sleeping surface. The bed is spacious enough to accommodate two people, making it a great option for hosting guests overnight.

NAVELLI



ADA

GAMZE KAYA

A modern and chic coffee table Ada; is perfect for elevating the style and functionality of any living space. Crafted with high-quality materials and sleek design, this table is a practical addition to your home and a statement piece that will impress your guests.

ARTLINE

NAVELLI STUDIO



Artline coffee table - a true work of art! This stunning coffee table features a sturdy MDF base with an oak veneer and a modern artistic line on the top surface. The sharp edges of the table and the natural oak color give it a clean and minimalist look, perfect for modern homes and offices.

The tumbled rice finish of the legs creates a perfect contrast with the natural wood tones of the tabletop, and the robust construction ensures that this coffee table will withstand the test of time. The Artline coffee table is not only practical but also a statement piece that will provide style and elegance to any room.



ASYA

NAVELLI STUDIO

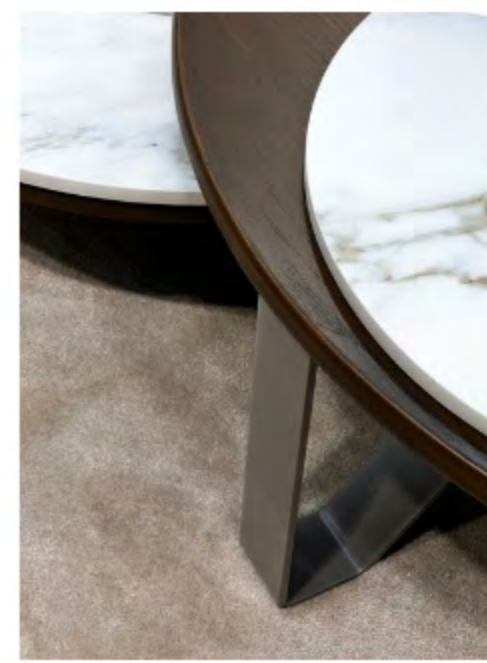


Asya Coffee Table, a blend of modern style and natural elegance. This coffee table is made with high-quality MDF and features a variety of veneering options that give you the flexibility to customize it to match any decor.

The Asya coffee table is not only visually appealing, but also functional. Its spacious surface area provides ample space for your drinks, snacks, and other essentials. Plus, its sturdy construction ensures it can withstand daily wear and tear.

CAPELLA

GAMZE KAYA



Capella Coffee Table is a sleek and elegant addition to any living space. With its MDF top featuring a range of coating options, including a marble-patterned ceramic top, and its perfectly matched metal legs, the Capella coffee table is a perfect combination of style and function. Meanwhile, the Capella coffee table is available in different sizes, making it a versatile choice for any room.

CELL

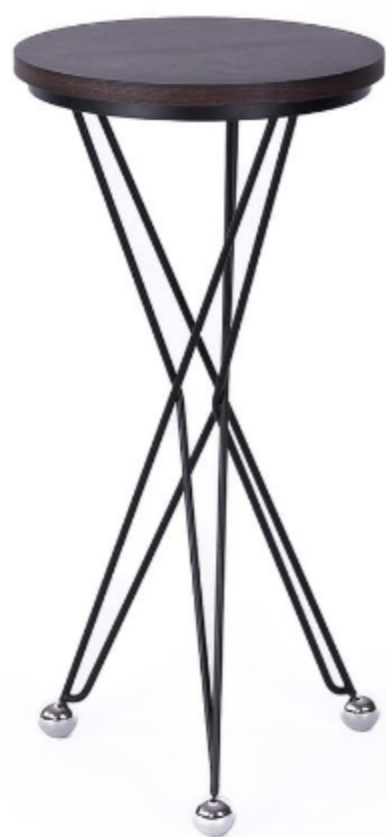
NAVELLI STUDIO



The Cell Side Table is lightweight and easy to move, making it a perfect option for anyone looking for mobility and convenience. Its slim design, chrome and matte black metal leg options and different coating options make it suitable for use in any room, and its ability to double as a laptop table adds to its versatility.

EIFFEL

NAVELLI STUDIO



Eiffel, the versatile and stylish high table that will elevate your space. Featuring long, cross-braced metal legs finished in sleek chrome, this side table makes a statement with its bold design. The legs meet at a perfectly round metal sphere at the base, ensuring stability and durability. This table isn't just limited to use as a side table either. Its height makes it an ideal choice for use as a bar table or even as an accent piece in your office. Whatever your needs, the Eiffel is up to the task.



GROUND

GAMZE KAYA

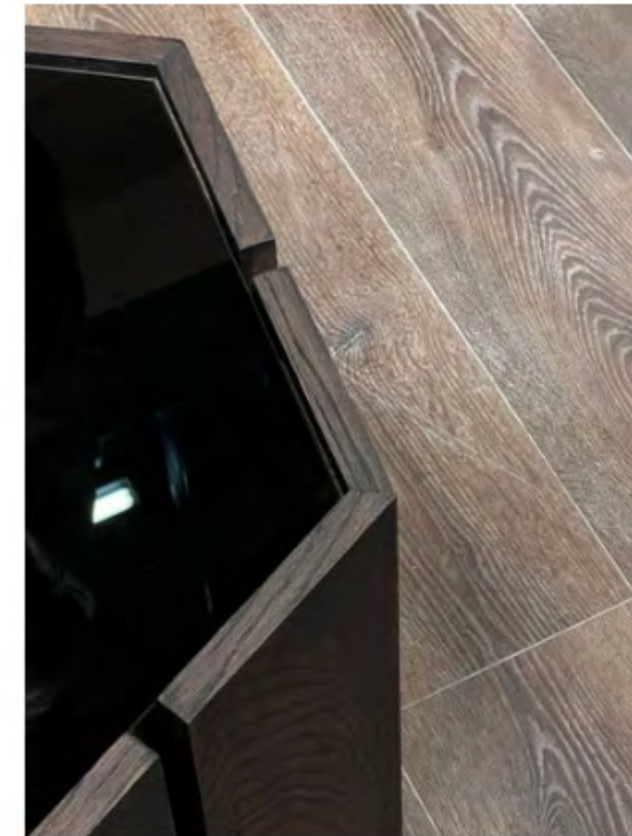
The ground coffee table is a low-lying furniture piece typically found in living rooms or lounges. It serves both functional and aesthetic purposes, providing a convenient surface for placing items such as drinks, books, and decorative pieces, while also adding to the overall design of the space. Ground Coffee Tables come in a range of sizes, shapes, and styles, making them a versatile and popular choice for any home decor.

HEXA

GAMZE KAYA



The Hexa coffee table takes its name from its hexagonal shape and is made with a sturdy MDF body covered in oak veneer. The body features straight gaps between wooden pieces, giving the table a distinct style. The tabletop can come in various colors, with options including lacquered MDF or a ceramic top with a marble-like design. With its unique design, the Hexa coffee table comes in different widths and heights, allowing it to fit seamlessly into any living space. The table's modern and sleek style is sure to add a touch of sophistication to your home.

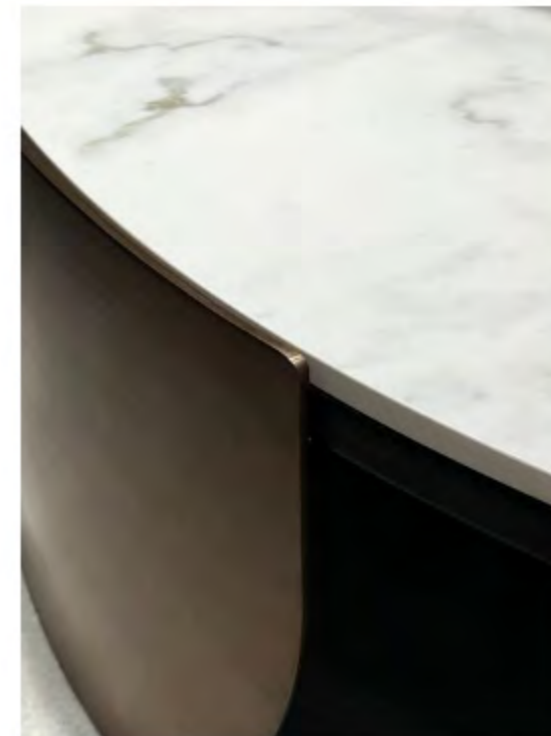


HONEY

NAVELLI STUDIO



The Honey Coffee Table highlights the perfect harmony between the three metal legs and the MDF or ceramic table top: The Honey Coffee Table is a stylish furniture piece that features three coated metal legs with oval transitions, supporting a round table top that can come in various finishes. The MDF table top is available in different veneering options, while the ceramic version can mimic the look of marble to suit your personal taste.



İSTANBUL

GAMZE KAYA

The Istanbul Coffee Table is a sturdy and stylish furniture piece made entirely of high-quality MDF wood material. It is available in different sizes. The table top is veneered with various color options that complement different styles of interior design, giving you the flexibility to choose a finish that fits your personal taste. The MDF material makes the coffee table durable and long-lasting.

MONO

NAVELLI STUDIO



The Mono Side Table is a small yet elegant piece of furniture that is perfect for any modern living space. Made from high-quality metal material with a black static paint veneering finish, this side table boasts a sleek and contemporary look that will elevate the style of any room.



MOON

NAVELLI STUDIO



Crafted with a modern design in mind, and available in a variety of colors, the Moon side table offers a sleek and contemporary look that will complement any interior decor. The circular legs create a visually stunning base that is not only aesthetically pleasing but also provides excellent stability and support.



NENDO

NAVELLI STUDIO

The Nendo wooden coffee table is an elegant piece of furniture that will add warmth and style to any living space. Made primarily from high-quality wood, this coffee table is both sturdy and durable, ensuring that it will last for many years to come.

NORM

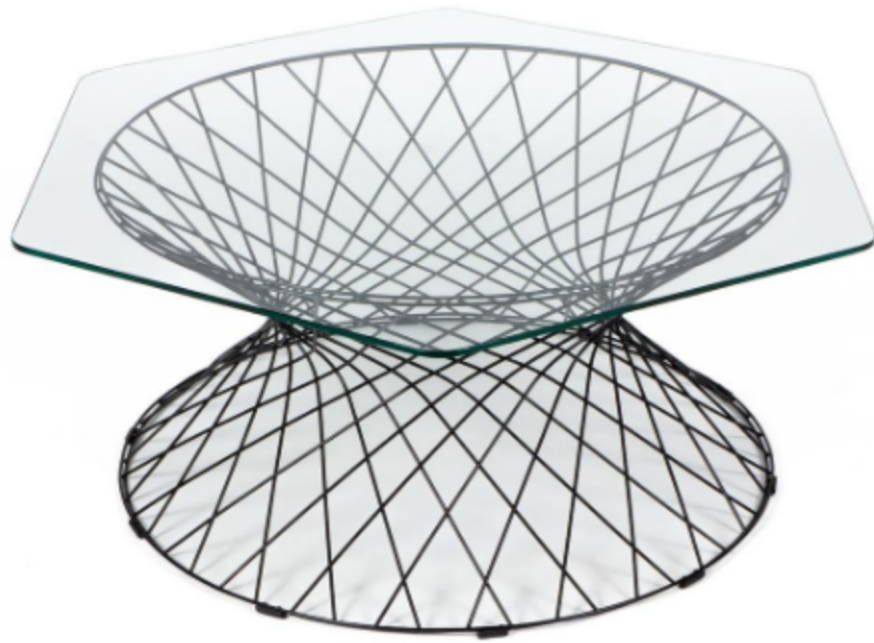
GAMZE KAYA



The Norm Coffee Table Set. This set includes three tables of varying sizes, each combining have different colors on MDF. The unique metal legs provide a sturdy base for the tables while adding a touch of aesthetic flair. Designed to complement any decor style, the Norm Coffee Table Set offers the perfect combination of functionality and aesthetics. Whether you use them separately or as a nested set, these tables provide ample surface area for drinks, books, and other items. Plus, their compact size makes them easy to move and store.

PARIS

GAMZE KAYA



the Paris coffee table is a stunning piece of furniture that perfectly symbolizes the idea of unity and love. This beautiful table features intricately interlocking metal legs that fit together seamlessly, creating a harmonious and elegant design.

Crafted with attention to detail and the highest quality materials, the Paris coffee table is a testament to the exquisite design and expert craftsmanship. The metal legs are made with precision and care, and the tabletop is finished with luxurious glass that adds a touch of sophistication to any room.



POTA

NAVELLI STUDIO



Pota side table - a unique addition to any home. This table features a round top made from oak veneer on top of MDF and sleek black metal legs that are reminiscent of a basketball hoop when turned upside down.

The metal legs of the Pota side table are veneered in black static paint, adding a touch of modern elegance to the overall design. The legs are also strong and sturdy, ensuring that the table will remain stable and durable for years to come.



TROYA

GAMZE KAYA

The Troya side table, with its metallic-looking top and sleek, slender legs, this table is sure to add a touch of sophistication to your decor. The slender legs of the Troya side table are delicate yet strong, providing stability and support for the tabletop. The overall design is minimalist and modern, making it a versatile piece that can complement a range of decor styles.

VALLEY

NAVELLI STUDIO



Valley Coffee Table and Side Tables: expertly crafted with MDF and designed to maintain a modern aesthetic, these tables come in a variety of shapes, sizes, and finishes to suit any decor. Whether you prefer a sleek black glass or a classic wooden top, the Valley tables offer a striking addition to any living space. Available in both cylindrical and square shapes, the tables feature expertly crafted edges and clean lines that exude sophistication and elegance.



VEE

NAVELLI STUDIO



The Vee Coffee Table features a uniform design, with each side of the V-shape measuring the same length. This symmetry creates a balanced and harmonious feel, while the table's design provides a timeless modernity. Crafted from high-quality materials, this coffee table is built to last. Its sturdy construction ensures that it can withstand the rigors of daily use.



VENGE

NAVELLI STUDIO



Venge Side Table is a versatile piece of furniture that crafted from MDF with a dark finish, this table features a symmetrical design with a matching tabletop and base and complements a wide range of decor styles. Whether you're looking to create a modern, minimalist look or simply add a touch of sophistication to your home, the Venge Side Table is sure to impress.



WOODY

NAVELLI STUDIO



The Woody Coffee Table - is a stunning piece of furniture that seamlessly blends modern style with the warmth and texture of natural wood. Crafted from MDF and finished with a beautiful oak veneer, this coffee table features two symmetrical tabletops - one on top and one on the bottom - that are connected by slim, specially-designed legs.

In short, if you're looking for a coffee table that seamlessly blends style and function while bringing the warmth and beauty of natural wood into your home, the Woody Coffee Table is a perfect choice.